

GALAPAGOS LAND BASED ISABELA ISLAND

5 days / 4 nights



Wednesday: *Disembark Aggressor, transfer to chosen hotel*

After you have finished all your dives and excursions with Aggressor, you will be transferred to chosen hotel in Puerto Ayora / Santa Cruz Island.

Thursday AM: *Transfer to Santa Cruz pier, shared boat transfer to Isabela Island; PM: Shared Tintoreras snorkel excursion*

TINTORERAS - After sailing for about 20 minutes, you will board a panga (small boat) that will take you to the pier located on a small islet. You will then start a one-hour walk through lava cracks filled with clear water where 'tintoreras' or white tip reef sharks regularly come to rest. Along the way, you will come across a small green lagoons where colonies of baby sea lions that can be observed. Back on the boat in the afternoon, you will be able to snorkel and swim with sea lions, penguins, rays, and sea turtles.

Friday: *Shared hiking excursion to Sierra Negra Volcano*

SIERRA NEGRA VOLCANO - Get ready for Sierra Negra Volcano hike (wear comfortable clothes, walking shoes and a light rain jacket). Make sure your camera is stored in waterproof bags, wear some sunscreen, bring enough water, and a hat. a 40-minute drive from Puerto Villamil through some barren lava flows and endemic vegetation, you will arrive to starting point for the hike. The hike is long in terms of distance, but not very difficult as the slopes are quite gradual. The first hour the trail goes uphill on a relatively gentle slope through some lush fern-covered trees. Once you get to the edge of the rim you can catch sight of the 6 miles in diameter and 300 feet deep caldera. Sierra Negra Volcano has the second largest crater in the world. The hike then continues for the next hour along the rim of the caldera as you will witness the vegetation get drier and drier as you advance. You will then reach Volcan Chico, a collection of small craters which erupted during the 1970's where you can see fumaroles and an impressive volcanic landscape. This area also provides a spectacular view of Elizabeth Bay across Isabela. You will have time to enjoy your box lunch under the shade of a large tree known as Jaboncillo before reaching Volcan Chico. Return time to San Vicente Hotel – Puerto Villamil is programmed around 3 pm.

NOTE: There is an option to ride a horse for an additional cost, if interested please let us know beforehand. However, horse rides only reach till Jaboncillo.

Saturday: *Shared snorkel excursion to Tunnels*

THE TUNNELS - Embark on a must-do day trip to one of the most bio diverse sites in Galapagos. Los Tuneles, also known as Cabo Rosa, is an uninhabited islet located 1 hour from Puerto Villamil, Isabela Island. These lava formations look like tunnels and along hundreds of years have become a marine paradise inhabited by varied endemic Galapagos species. Ideal for snorkeling due to its crystal-clear and shallow waters. This site is home to sea turtles, albatrosses, flamingos, iguanas, sea lions, blue-footed boobies, royal frigate, manta rays, penguins, sea lions, sea turtles, a variety of birds, lobsters, sea snakes, among other species. An exciting day trip to an iconic Galapagos site. Difficulty: Moderate, light hiking over lava rock. Dry landing: small zodiac boat to dock. Openwater snorkeling from boat. The tour starts either at 7:30 or 10:30 am from your hotel of stay in Puerto Villamil, Isabela. The first stop is Roca Union a small islet located in the open sea where you can catch sight of pelicans, blue-footed boobies and Nazca Boobies and, occasionally, sea lions resting on the rocks. Finados snorkeling site is the next stop, where you can swim next to sea turtles, white-tipped sharks (endemic to the islands), trumpetfish and surgeon fish. With some luck, eagle and golden rays will come to this site too. Getting to Los Tuneles will take around 1 ½ – 2 hrs. Once there, the speedboat will navigate through various spots in and around the Lava Tunnels. Here you get the chance to do some more snorkeling and enjoy some short walks while observing the landscape and wildlife inhabiting the area. A box lunch will be provided at midday. Return time to Puerto Villamil is estimated around 3:00 PM. Wildlife to see: Galapagos Sea Lions, Marine iguanas, Lava lizards, Seahorses, Zayapas, Sharks, Killer Whales (not frequently), tropical birds, blue-footed boobies, Nazca Booby, Brown pelicans, Cactus finches.

IMPORTANT NOTE: In order to fulfill this tour, you must be at Isabela Island (Puerto Villamil) one day prior to departure.

Sunday: *Transfer to Isabela pier, shared boat transfer to Santa Cruz Island, transfer to Baltra Airport, Baltra Island for national flight.*

In the morning you will be transfer to Santa Cruz Island, and then transfer to the Airport for taking your flight back to the continent and international connections.

GALAPAGOS LAND BASED ISABELA ISLAND

5 days / 4 nights (continued)

INCLUDED:

- Transfer from Puerto Ayora Town pier to chosen hotel in Puerto Ayora / Santa Cruz Island with local language driver.
- One night of lodging at chosen hotel in Santa Cruz Island, in a double/twin room with breakfast and taxes
- Transfer from chosen hotel to Santa Cruz pier
- Ticket for shared speedboat transfer from Santa Cruz Island / Puerto Ayora Town to Puerto Villamil Town / Isabela Island
- Transfer from Puerto Villamil Pier / Isabela Island to chosen hotel
- Three nights of lodging at chosen hotel in Puerto Villamil / Isabela Island, in a double/twin room with breakfast, and taxes
- Half day shared snorkel excursion to Tintoreras with bilingual guide, snorkel equipment, and transport
- Full day shared hiking excursion to Sierra Negra Volcano with bilingual guide, box lunch, and transport
- Full day shared snorkel excursion to Tunnels with bilingual guide, box lunch, snorkel equipment, and transport

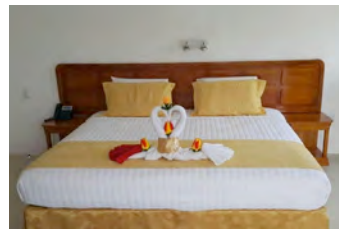
- Transfer from hotel to Puerto Villamil Pier / Isabela Island
- Ticket for shared speedboat transfer from Puerto Villamil Town / Isabela Island to Santa Cruz Island / Puerto Ayora Town
- Transfer from Santa Cruz pier to Baltra Airport, Baltra Island from Puerto Ayora / Santa Cruz Island (takes 1 ½ hours) with local language driver.

NOT INCLUDED:

- Airfare Guayaquil/ Galapagos / Guayaquil
- Meals and services not mentioned above
- Galapagos National Park Entrance fee – paid in cash upon arrival to the island
- TCT - paid at Guayaquil /Quito Airport
- Entrance Fee to Isabela Island
- Water taxi from piers to speedboats
- Gratuities to guides and crew
- Expenses due to mishaps and situations outside of the control of Bambutravel



Hotel Deja Vu



Hotel Deja Vu



Hotel Casita del Playa



Hotel Casita del Playa



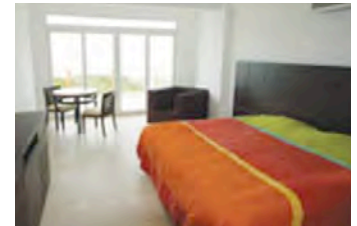
Hotel Mainao



Hotel Mainao



Hotel Albemarle



Iquana Crossing



Hotel Solymar



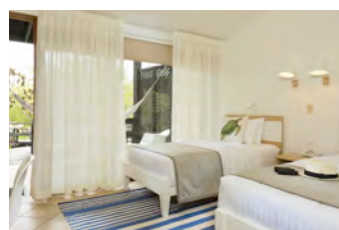
Hotel Solymar



Finch Bay



Finch Bay - Finch Room



Finch Bay - Garden view



Finch Bay - Ocean View Suite